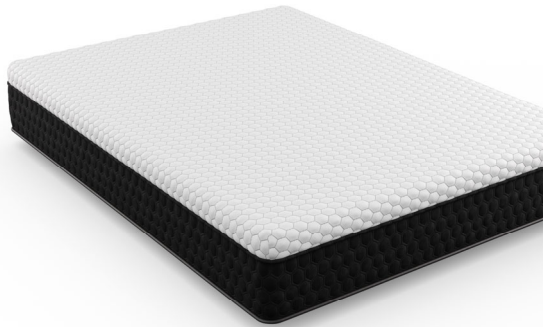
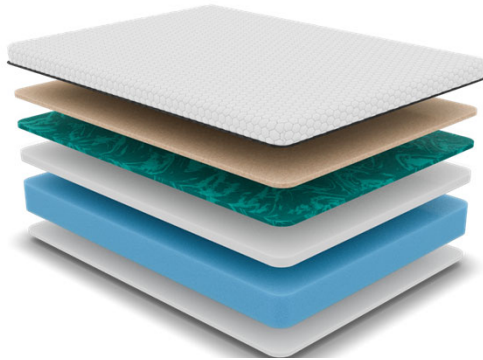


LUNESSENCE



Scottsdale Medium

Copper & Gel Smooth Top – 15"



20-Year Warranty



CoolTouch Temperature Regulating Fabric: Sleeps Cool

Special conductive yarns actively move heat through the fabric to maintain a cool, comfortable sleeping environment all night long.



Cool Copper Memory Foam: Sleeps Cool

Copper infused memory foam regulates temperature for deeper sleep by drawing excess heat away from the body while absorbing pressure so you can sleep undisturbed without tossing and turning



Ventilated Gel Memory Foam

Adapts to your body contours providing cradling comfort and enhanced pressure relief while allowing heat to move away from the body to help keep you cool and comfortable.



CertiPUR-US Certified Foams

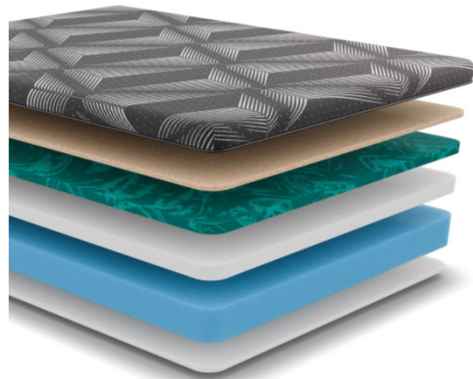
This High-Density plant-based foam is eco-friendly and designed for lasting, healthy comfort. And because it's made with open cell technology, it's more breathable allowing you to sleep cooler.



High Density Orthopedic Support Core

Pressure relief and contouring is delivered with our stable high density, Certipur-US certified foam core to provide support and comfort.

LUNESSENCE



20-Year Warranty



Elk Grove Firm

Copper & Gel Smooth Top – 14"



Advanced Adaptive Fabric

This ultra soft, high performance material stretches to conform to your body and helps to regulate temperature while you sleep by moving heat and moisture away from the skin surface.



Cool Copper Memory Foam: Sleeps Cool

Copper infused memory foam regulates temperature for deeper sleep by drawing excess heat away from the body while absorbing pressure so you can sleep undisturbed without tossing and turning.



Ventilated Gel Memory Foam

Adapts to your body contours providing cradling comfort and enhanced pressure relief while allowing heat to move away from the body to help keep you cool and comfortable.



CertiPUR-US Certified Foams

This High-Density plant-based foam is eco-friendly and designed for lasting, healthy comfort. And because it's made with open cell technology, it's more breathable allowing you to sleep cooler.



High Density Orthopedic Support Core

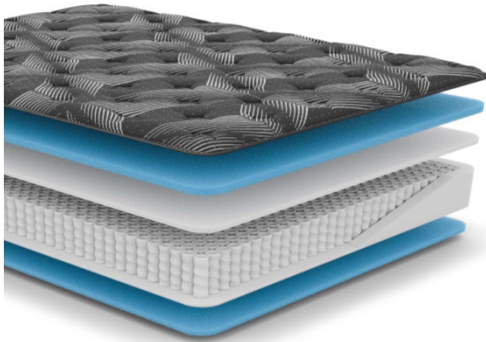
Pressure relief and contouring is delivered with our stable high density, Certipur-US certified foam core to provide support and comfort.

LUNESSENCE



Fresno Medium

Tight Top – 13.5"



Advanced Adaptive Fabric

This ultra soft, high performance material stretches to conform to your body and helps to regulate temperature while you sleep by moving heat and moisture away from the skin surface.



Cool Gel Memory Foam: Sleeps Cool

- Gel infused, rapid-response memory foam cradles unique curves. Memory foam absorbs pressure so you can sleep undisturbed without tossing and turning.



CertiPUR-US Certified Foams

This High-Density plant-based foam is eco-friendly and designed for lasting, healthy comfort. And because it's made with open cell technology, it's more breathable allowing you to sleep cooler.



Reinforced Open Coils

More adaptive than traditional coils with a hinged design that works to evenly distribute weight and prevent roll-together. Extremely durable for lasting support.



High Density Foam Encasement

High-Density foam encasing delivers a larger sleep surface and a strong seat edge.



20-Year Warranty

13" Lochdale PT

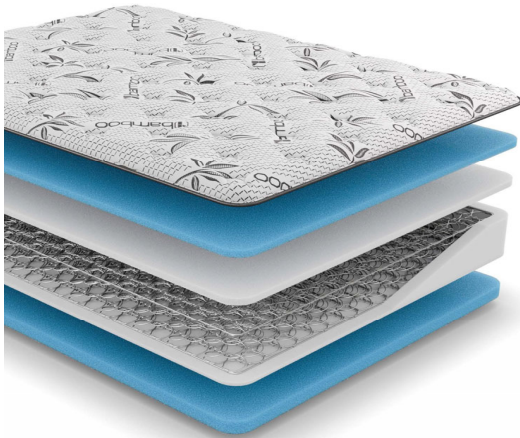


L U N E S S E N C E

- ✓ **TencelTouch Natural Fabric: Sleeps Clean & Soft**
 - Natural Tencel yarns actively move heat through the fabric to maintain a cool, comfortable sleeping environment all night long.
- ✓ **Cool Gel Memory Foam: Sleeps Cool**
 - Gel infused, rapid-response memory foam cradles unique curves. Memory foam absorbs pressure so you can sleep undisturbed without tossing and turning.
- ✓ **Certipur-US HD Comfort Layer: Healthy Comfort**
 - Gives your body the support it needs for proper spinal alignment and is made with open cell technology for lasting comfort and breathability.
- ✓ **Foam Encased Design**
 - Supportive Edge Support & Increased Sleep Surface
 - Reduces aches and pain with enhanced support.
- ✓ **Individually Wrapped Coil System**
 - Virtually eliminates motion transfer between sleepers.
 - Specific Pressure Point Relief
- ✓ **Made in USA**
 - 20 year warranty

Upgraded Look Coming Next
Month

LUNESSENCE



10-Year Warranty



Round Rock Firm

Tight Top – 12"



Advanced Adaptive Fabric

This ultra soft, high performance material stretches to conform to your body and helps to regulate temperature while you sleep by moving heat and moisture away from the skin surface.



CertiPUR-US Certified Foams

This High-Density plant-based foam is eco-friendly and designed for lasting, healthy comfort. And because it's made with open cell technology, it's more breathable allowing you to sleep cooler.



Reinforced Open Coils

More adaptive than traditional coils with a hinged design that works to evenly distribute weight and prevent roll-together. Extremely durable for lasting support.



High Density Foam Encasement

High-Density foam encasing delivers a larger sleep surface and a strong seat edge.

11 – 11.5" Janella



LUNESSENCE

- ✓ **Aloe Touch Temperature Regulating Fabric:**
 - Special aloe infused yarns provide a natural cool and comfortable sleeping surface.
- ✓ **Cool Gel Memory Foam: Sleeps Cool**
 - Gel infused, rapid-response memory foam cradles unique curves. Memory foam absorbs pressure so you can sleep undisturbed without tossing and turning.
- ✓ **Certipur-US HD Comfort Layer: Healthy Comfort**
 - Gives your body the support it needs for proper spinal alignment and is made with open cell technology for lasting comfort and breathability.
- ✓ **Dynamic Edge Coil:**
 - For more specific pressure point relief and no motion transfer.
 - Consistent Comfort & Pressure Relief
- ✓ **Made in USA**
 - 10 year warranty

Upgraded Look Coming Next Month

LUNESSENCE



10-Year Warranty



Auburn Medium

Comfortop – 10"



Luxury Air Flow Quilting

A breathable, luxury stretch knit design for more consistent temperatures and enhanced pressure relief.



CertiPUR-US Certified Foams

This High-Density plant-based foam is eco-friendly and designed for lasting, healthy comfort. And because it's made with open cell technology, it's more breathable allowing you to sleep cooler.



Reinforced Open Coils

More adaptive than traditional coils with a hinged design that works to evenly distribute weight and prevent roll-together. Extremely durable for lasting support.



High Density Foam Encasement

High-Density foam encasing delivers a larger sleep surface and a strong seat edge.

9" Attaway



L U N E S S E N C E

- ✓ **SoftTek Stretch Fabric:**
 - Eco Friendly
- ✓ **Certipur-US HD Comfort Layer: Healthy Comfort**
 - Gives your body the support it needs for proper spinal alignment and consistent comfort. Made with open cell technology for breathability.
- ✓ **VertiCoil Innerspring System**
 - More surface coverage supports your body for a better night's sleep.
- ✓ **Made in USA**
 - 10 year warranty

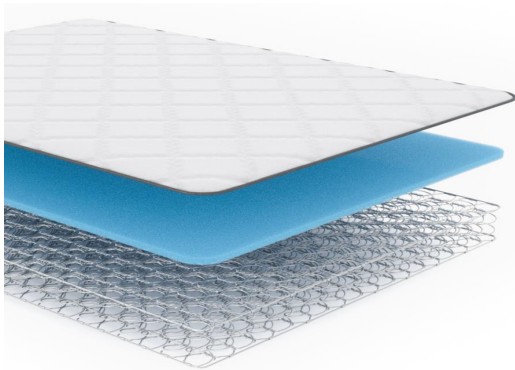
Upgraded Look Coming Next Month

LUNESSENCE



Sacramento Medium

8" Tight Top



LuxuryAir Flow Quilting

A breathable, luxury stretch knit design for more consistent temperatures and enhanced pressure relief.



CertiPUR-US Certified Foams

This High-Density plant-based foam is eco-friendly and designed for lasting, healthy comfort. And because it's made with open cell technology, it's more breathable allowing you to sleep cooler.



Reinforced Open Coils

More adaptive than traditional coils with a hinged design that works to evenly distribute weight and prevent roll-together. Extremely durable for lasting support.



5-Year Warranty

Decatur 5" Foam

LUNESSENCE



- ✓ **SoftTek Stretch Fabric:**
 - Eco Friendly

- ✓ **Certipur-US HD Comfort Layer: Healthy Comfort**
 - Gives your body the support it needs for proper spinal alignment and consistent comfort. Made with open cell technology for breathability.

- ✓ **Made in USA**
 - 1 year warranty

Upgraded Look Coming Next Month

4" Plaid Foam



LUNESSENCE

- ✓ **SoftTek Stretch Fabric:**
 - Eco Friendly
- ✓ **Certipur-US HD Comfort Layer: Healthy Comfort**
 - Gives your body the support it needs for proper spinal alignment and consistent comfort. Made with open cell technology for breathability.
- ✓ **Made in USA**
 - 1 year warranty

Upgraded Look Coming Next Month

6.5" CQ Foam

LUNESSENCE



- ✓ **SoftTek Stretch Fabric:**
 - Eco Friendly
- ✓ **Certipur-US HD Comfort Layer: Healthy Comfort**
 - Gives your body the support it needs for proper spinal alignment and consistent comfort. Made with open cell technology for breathability.
- ✓ **Made in USA**
 - 1 year warranty

Upgraded Look Coming Next Month